



INTELESENSE TECHNOLOGIES™

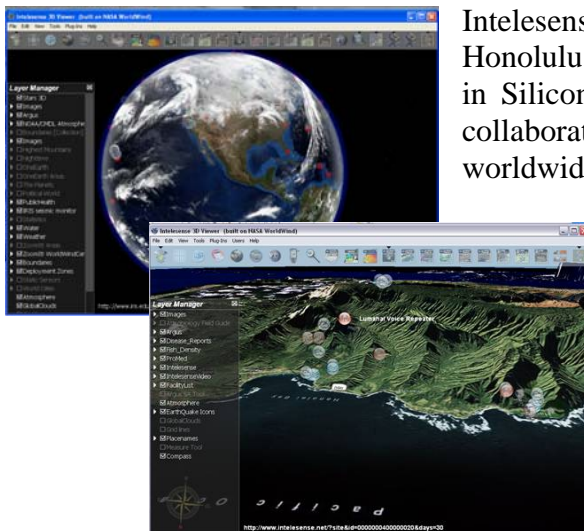
Global Integrated Monitoring™

Intelesense Technologies integrates environmental, public health, and other data from anywhere in the world in real-time. Intelesense has developed a world-wide wireless sensor network for air, water, weather, and imagery that communicates its data over the Internet from anywhere in the world, integrates with data from many other sources automatically and provides real-time advanced visualization over the Internet. This global IntelNet forms an integrated *georepository* of all relevant information for a particular region.

The system can be used for a wide range of applications, including weather monitoring, water and air quality monitoring, biotelemetry, imagery and audio capture, field data collection, earthquake monitoring, buoy networks, tsunami warning, and emergency telemedicine and disaster response. At the same time it provides wireless communication infrastructure for remote areas.



Intelesense Technologies was founded in early 2005 to enable worldwide integrated monitoring of the environment and its inhabitants. A global network of wireless sensors that are integrated with many other data sources helps to better understand their interrelationships. The IntelNet technology is currently deployed in multiple sites in Hawaii (Kauai, Oahu, and Maui), the continental US (California), Asia (Vietnam) and Africa (Ethiopia). Planning for future deployments in other areas of the Pacific (Palau, Palmyra, Okinawa), Asia (Thailand), and Africa is currently underway.



Intelesense currently has a corporate office in Honolulu, Hawaii; Research and Development offices in Silicon Valley, California; and field offices with collaborative partners in each of its deployment zones worldwide.

Current projects range from protecting some of the most beautiful and biodiverse places on our planet, to tracking emerging infectious diseases (e.g. bird flu), to helping the CDC provide therapies in Africa, to helping children from around the world to connect and interact with each other and better understand their environment and themselves.

*Integrated Information from Anywhere in the World
to Anywhere in the World, Securely, Reliably, and in Real-Time.*